

P&H Supply
Co., Inc

Better Products.
Better Service.

2020 Catalog

**P&H
SUPPLY**

1-800-836-8705





P&H Supply Co.

Better Products, Better Service

Gary Pate
Alabama Sales
205-907-7074



Rem Barnett
Georgia Sales
478-718-9273



Pump Repairs & Parts

Myers Pumps Apex Pumps
FMC Pumps Giant Pumps
Vactor Pumps General Pumps
Udor Pumps

Replacement Parts

Regulators / Unloaders
Ball Valves
Hose Reel Swivels
Throttle Cables
Pressure & Vacuum Gauges
Hose Reel Motors
Strainers / Handguns



Accessories

Sewer cameras
Hose Mending Tools / Fittings
Root Cutters / Saw Blades
Performance & Steel Drilled Nozzles
Tiger Tails / Hydrant Hoses
Manhole Hooks / Prybars
Upper / Lower Manhole Rollers
Boom Hoses / Vacuum Tubes
Pipe Plugs / Smoke Blowers
Piranha Hose



Table of Contents

• Line Sheet	Page 2
• Table of Contents	Page 3
• Services & Repairs	Page 4 - 7
• Regulators, Relief Valves & Unloaders	Page 8
• Valves	Page 9
• Jetter Replacement Parts	Page 10
• Truck Replacement Parts	Page 11
• Vacuum Tubes, Boom hoses & Clamps	Page 12
• Accessories	Page 13 - 14
• Sewer Cleanout Tools	Page 15
• Smoke Testing	Page 16
• Pipe Plugs	Page 17
• Nozzles	Page 18 - 28
• Extensions & Skids	Page 29
• Chain & Root Cutters	Page 30 - 31
• Sewer Hose	Page 32 - 33
• Swage Tools, Dies & Fittings	Page 34 - 36
• Inspection Equipment	Page 38 - 49
• Jetting Equipment	Page 40 - 43
• Street Sweepers	Page 44

Don't see what you're looking for?
Give us a call!



www.phsupplyco.com

Georgia / Alabama

Ga. Phone: 800-836-8705

Al. Phone: 205-907-7074

Sewer Camera Repairs

Replacement Parts

Quality work



We repair most types of Sewer Cameras!



www.phsupplyco.com

Georgia / Alabama

Ga. Phone: 800-836-8705

Al. Phone: 205-907-7074

On site road repairs available

To Schedule call:
Gee: 478-494-1065
Office: 800-836-8705

**Quality
Service**



**Satisfaction
Guaranteed**



Combination truck repairs
Most makes and models



Jetter repairs
Most makes and models



Equipment refurb
Most makes and models



Water pump repairs
All makes and models



www.phsupplyco.com

Georgia / Alabama

Ga. Phone: 800-836-8705

Al. Phone: 205-907-7074

Camera repairs Nozzle repairs

Swage tool repairs Root cutter repairs

**Quality
Products**



**Quality
Service**



Large inventory of parts available
ready to ship



Nozzle Repairs
All brands



**Video Inspection
Repairs**
Most brands



**Swage Tool / Root Cutter
Repairs**
Most brands



www.phsupplyco.com

Georgia / Alabama

Ga. Phone: 800-836-8705

Al. Phone: 205-907-7074



New pumps



Pump repairs

Rebuild kits



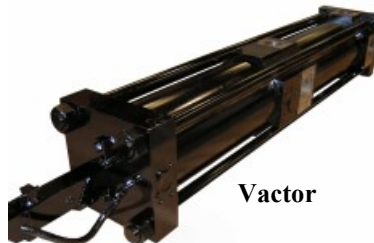
Myers



Giant



Udor



Vactor



Udor



Giant



Myers



General



FMC

*** On-site repairs available ***



www.phsupplyco.com

Georgia / Alabama

Ga. Phone: 800-836-8705

Al. Phone: 205-907-7074

Regulators, Relief Valves & Unloaders



Giant Pressure Regulator



**Myers Pressure Regulator
B3 Style**



**Myers Pressure Regulator
C5 Style**



Baird MP Pressure Regulator



Baird HP Pressure Regulator



**Baird Repair Kit
For MP & HP Pressure Regulators**



Handgun Pressure Relief Valve



Mono-Block Unloader



Udor Pressure Regulator



Giant Relief Valve



General Pressure Regulator



Udor Pressure Regulator



www.phsupplyco.com

Georgia / Alabama

Ga. Phone: 800-836-8705

Al. Phone: 205-907-7074

Valves



Ball Valves
3-way 5000 psi



Ball Valves
2-way 5000 psi



Ball Valves
2-way 3000 psi



Ball Valves
2-way 3000 psi



Ball Valves
2-way 3000 psi



Drain Valves
2-way Full Flow



Gate Valves
Lever Style 3" to 6"



Gate Valves
Knife Style 3" to 6"



Butterfly Valves
Lever style 3" to 8"



Vacuum Relief Valves
Fits Vactor, Vacall
Vac-Con & Super Products



Flow Control Valves
Fits Vac-Con & Pipe Hunter



Multi flow Valves
Fits Vactor



www.phsupplyco.com

Georgia / Alabama

Ga. Phone: 800-836-8705

Al. Phone: 205-907-7074

Jetter Replacement Parts



Pressure Gauges



TM Style Reel Swivels

Repair kits available



SS Reel Swivels



Y-Strainers



T-Strainers



Strainer Screens



Poly Tank Lids



Poly Tank Baskets



Clutches and Clutch Packs



Throttle / Choke Controls



Tattletale Switches & Gauges



Level Wind & Components



www.phsupplyco.com

Georgia / Alabama

Ga. Phone: 800-836-8705

Al. Phone: 205-907-7074

Truck Replacement Parts



Float Ball Cages



Float Balls



Rodder Pump Parts



Hydraulic Valves



Electrical Air / Hyd. Valves



Hydraulic Hose Reel Motors



Hose Reel Bearings



Hose Reel Components



Hydraulic Cylinders



Pendant Controls



Level Winds



Arrow Boards / Strobe Lights



www.phsupplyco.com

Georgia / Alabama

Ga. Phone: 800-836-8705

Al. Phone: 205-907-7074

Vacuum Tubes, Hoses & Clamps

Available in various sizes & lengths



Aquatech Tubes



Camel / Vacall / Gapvax Tubes



Vac-Con / Vactor Tubes



Boom Elbows



Flanges for Boom Hose



Boom Hoses

Sold in cuffed & by the foot



Compression Boot



Power Clamp



Spiral Clamp



Bandlock Style Clamp



Flange Style Clamp w/ Ring



Flange Style Clamp w/ J-Hook



www.phsupplyco.com

Georgia / Alabama

Ga. Phone: 800-836-8705

Al. Phone: 205-907-7074

Jetter Accessories



High Pressure Portable Reels

Available with 1/4", 3/8" & 1/2" Hose



Floor Draining Kit

1/8" Stainless Steel Braid or
Thermoplastic Hose
Available in 50' and 75'



Super Duty Lateral Cart

Includes 200' of 1/2" Piranha Hose
with Emergency Shut Off Valve



Fill Hose

2-1/2" Male x 2-1/2" Female Swivel NST
Available in 25' or 50'



Fill Hose

2-1/2" F Camlock x 2.5" Female Swivel NST
Available in 25' or 50'



Leader Hose

Available in 1/2", 3/4" & 1"
Stocked Lengths 10' & 20'
Custom sizes upon request



High Performance Spray Gun with 21" Barrel



Hand Gun / Shut Off

10@5000



Handgun Hose

Max. 4000 PSI

3/8" x 50' 1/2" MxM Ends



Stainless Steel Lances

Various sizes available



Handgun Kit

Max 4000 PSI

25' or 50' hose assembly, spray gun with swivel inlet,
36" insulated spray wand, tip protector
& quick couplers.



Industrial Spray Tips

Stainless steel heat treated
replacement tips for use in wash down guns
and some nozzles.



www.phsupplyco.com

Georgia / Alabama

Ga. Phone: 800-836-8705

Al. Phone: 205-907-7074

Manhole Accessories



Hydrant Wrench



Manhole Lifter Magnet



Magnetic Manhole Lifter



Manhole Pry Bar

Available in 36"



Manhole Double Pick

Available in 36"



Manhole Cover Hooks

Available in 36" Straight and 90°



Lower Manhole Roller



Manhole Roller Cover

Heavy Duty w/ Poly Roller



Upper Manhole Roller

Heavy Duty w/ Poly Roller
Aluminum Roller available



Tiger Tails

Available in 2" and 3"
Other sizes available!



Manhole Guards

Hose Guide
Lid or Bypass Kit
available



Dye Tablets

Available in Red or Yellow
100 Tablets per Bottle
Also available in Powder form!



www.phsupplyco.com

Georgia / Alabama

Ga. Phone: 800-836-8705

Al. Phone: 205-907-7074

Sewer Cleanout Tools



Debris Basket

With 25' of Rope
Available in 6"-24"
Available with Pole



Debris Cylinder

With 25' of Rope
Available in 6"-12"



Debris Grit Catcher

With 25' of Rope
Available in 6"-24"



Aluminum Debris Trap

Available in 6"-18"
For use with Fiberglass Poles



Catch Basin Spoon Made of ash hardwood

Available in 6'-24'
*Fiberglass Poles Available
upon request*



Fiber Glass Poles

With Quick-Connect Ends
Available with Threaded
Ends



Vac Traps

Available 6"- 18" in Vactor, Vacall,
Camel and Aquatech



Sand Trap

With 25' of Rope
Available in 6"- 20"



Telescopic Debris Grabber Steel

Available in 15'-24'



Telescopic Claw Grabber Fiberglass

Available in 12'-24'



Handy-Clam

Available in 6'-25' with 12" or
16" Bucket



Handy-Clam Bucket

Available in 12" or 16"



www.phsupplyco.com

Georgia / Alabama

Ga. Phone: 800-836-8705

Al. Phone: 205-907-7074



Smoke Candle (Single Wick)

Sold by the dozen



Smoke Candle (Double Wick)

Sold by the dozen



Smoke Fluid

1 Gallon Container



Smoke Fluid

(4) 1 Gallon Containers



Smoke Fluid

5 Gallon Container



Smoke Fluid

55 Gallon Drum



Ripcord Smoke Tester

Available in Liquid or Smoke



Power Smoker 2

Available in Liquid or Smoke



www.phsupplyco.com

Georgia / Alabama

Ga. Phone: 800-836-8705

Al. Phone: 205-907-7074



**Inflation Hose w/ Monitoring
Gauge & Ball Valve - 20' Long**

Test & Block Plugs Flow Diversion Test Equipment



**Telescopic Aluminum
Placement Pole w/ adaptor**



**Pneumatic Single Size
Plug**

Available from 4"-21"
Blocks pipes 4"-21"



**Pneumatic Single Size
Plug with Bypass**

Available from 4"-21"
Blocks pipes 4"-18"



**Aluminum Mechanical
Pipe Plug**

Available from 6"-18"



**Aluminum Mechanical
pipe Plug with Bypass**

Available from 6"-18"



Multi-Size Plug

Available from 4"- 96"
Blocks pipes 4"- 96"



**Multi-Size Back Plug/
Leak Locators**

Available form 4"-96"
Blocks pipe 4"-96"



Flow Diverters

Available in bypass sizes
2,3,4,6, & 10"Blocks
pipes 4"-60"



**Lateral Plug/
Short Cleanout**

Available 1.5"-4"



**Lateral Plug/
Long Cleanout**

Available in 2"-6"

Complete Plug catalog available upon request.



www.phsupplyco.com

Georgia / Alabama

Ga. Phone: 800-836-8705

Al. Phone: 205-907-7074

Stainless Nozzles

Button



Its short body and smooth round nose make it ideal for tight turns in P traps and elbows, reducing hang ups.
3 to 6 rear jets @ 25°, 35°, 45° or 55°

Available in 1/8", 1/4", 3/8" and 1/2"
Flows from 3 to 10 GPM
Pressures up to 4000
Style: F or P

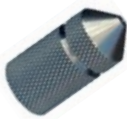
Thruster



The wider head design allows for rear jet angles as steep at 15-degrees which means more pulling power.
3, 4 or 6 rear jets @ 15° or 20°

Available in 1/8", 1/4", 3/8" and 1/2"
Flows from 3 to 10 GPM
Pressures up to 4000
Style: F or P

Jet



The longer length nose acts as a piercing rod in sewer & drain cleaning applications.
3 to 6 rear jets @ 35°, 45° or 60°

Available in 1/8", 1/4", 3/8" and 1/2"
Flows from 3 to 30 GPM
Pressures up to 4000
Style: F

Large



A general purpose dual angle nozzle combining the forces of both thrust and flush for superior pulling power.
6 to 8 rear jets @ 18°, 30°, 35° or 65°

Available in 1/2", 3/4" and 1"
Flows from 8-80 GPM
Pressures up to 4000
Style: F or P

Rotator



This rotating nozzle utilizes the combined forces of 0° & 45° angles creating a continuous "wall of water" to maximize line restoration.

Available in 1/8", 1/4", 3/8" 1/2", and 3/4"
Flows from 18-65 GPM
Pressures up to 4000
Style: F

How to order

Example: P - 12 35 - C - L
 ↓ ↓ ↓ ↓
 STYLE NPT GPM PSI LANCE

PSI Chart:

A. 1250	D. 2500
B. 1500	E. 3000
C. 2000	F. 4000



www.phsupplyco.com

Georgia / Alabama

Ga. Phone: 800-836-8705

Al. Phone: 205-907-7074

Drilled Nozzles



Button

This nozzle is best used for blockages in pipes up to 2".
3 to 6 rear jets @ 30°

Available in 1/8 "
Flows from 3-10 GPM
Pressures up to 4000
Style: F



Radial Bullet

This nozzle is designed to flush pipes up to 4".
3 to 6 rear jets @ 30° or 40°

Available in 1/4"
Flows from 3-10 GPM
Pressures up to 4000
Style: F



Penetrator

This nozzle is designed to flush pipes up to 4".
3 to 6 rear jets @ 15°

Available in 1/4" and 3/8"
Flows from 3-10 GPM
Pressures up to 4000
Style: P



Radial Bullet

This nozzle is designed to flush pipes up to 4".
3 to 6 rear jets @ 30°

Available in 3/8"
Flows from 3-10 GPM
Pressures up to 4000
Style: F



Button

This nozzle is designed to flush pipes up to 8".
3 to 6 rear jets @ 45°

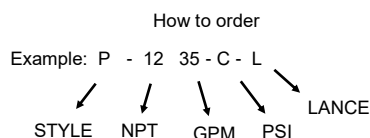
Available in 1/2"
Flows from 8-35 GPM
Pressures up to 4000
Style: F



Penetrator

This nozzle is designed to penetrate blockages in pipes up to 8".
3 to 6 rear jets @ 45°
Lance tip available

Available in 1/2"
Flows from 8 to 25 GPM
Pressures up to 4000
Style: P



PSI Chart:

A.	1250	D.	2500
B.	1500	E.	3000
C.	2000	F.	4000



www.phsupplyco.com

Georgia / Alabama

Ga. Phone: 800-836-8705

Al. Phone: 205-907-7074

Drilled Nozzles

Radial Bullet



The radial bullet is ideal for maintaining consistent jet stream while cleaning pipe walls.
6 rear jets @ 18° or 35°

Available in 3/4"
Flows from 35 to 40 GPM
Pressures up to 3000 psi
Style: F

Sanitary



This nozzle is best suited for general cleaning of debris from pipes 6" to 18".
6 or 8 rear jets @ 15° or 30°

Available in 1"
Flows from 65 to 80 GPM
Pressures up to 2000
Style: F or P

Steel Sand



The Steel Sand nozzle is ideal for removing heavy sand from pipes 6" to 15".
6 rear jets @ 12°

Available in 1"
Flows up to 80 GPM
Pressures up to 2000
Style: P

Penetrator



This penetrator nozzle is great for cleaning and breaking through clogged pipes 6" to 18".
Lance tip available
6 rear jets @ 12°

Available in 3/4" and 1"
Flows from 35 to 80 GPM
Pressures up to 3000
Style: P

Radial Vortex



This high-grade heat-treated nozzle is ideal for cleaning pipes 6" to 18".
6 rear jets @ 18° / 24°

Available in 1"
Flows up to 80 GPM
Pressures up to 3000
Style: F

How to order

Example: P - 12 35 - C - L
 STYLE NPT GPM PSI LANCE

PSI Chart:

A. 1250	D. 2500
B. 1500	E. 3000
C. 2000	F. 4000



www.phsupplyco.com

Georgia / Alabama

Ga. Phone: 800-836-8705

Al. Phone: 205-907-7074

Replacement Carbide Inserts &
Flow Guides available!

Performance Nozzles



Sand & Silt

This nozzle is suited for general heavy cleaning of most debris in 15" to 36" lines.
10 rear jets @ 15° and 20°

Available in 1"
Flows from 60 to 80 GPM
Pressures up to 2000
Style: P



Ultimate

This nozzle is best suited for heavy cleaning of 12" to 30" lines.
5 rear jets @ 12°
1/2"- 4 lbs , 3/4"- 9 lbs , 1"- 12.5 lbs

Available in 1/2" , 3/4" & 1"
Flows from 18 to 80 GPM
Pressures up to 2000
Style: P



Invader

Best for removing sand, gravel, dirt and grease from lines 8" to 30".
3 rear jets @ 12°
15 lbs

Available in 3/4" and 1"
Flows from 40 to 80 GPM
Pressures up to 3000
Style: P



Small Culvert

This nozzle is best suited for heavy cleaning of 10" to 36" lines.
12 rear jets @ 17° and 24°
11.5 lbs

Available in 1"
Flows from 60 to 80 GPM
Pressures up to 2000
Style: P



Large Culvert

Excellent for cleaning pipes in 18" to 60" storm and sanitary pipes.
12 rear jets @ 17° and 24°
28 lbs

Available in 1"
Flows from 65 to 80 GPM
Pressures up to 2000
Style: P

How to order

Example: P - 12 35 - C - L
 ↓ ↓ ↓ ↓
 STYLE NPT GPM PSI LANCE

PSI Chart:

A. 1250	D. 2500
B. 1500	E. 3000
C. 2000	F. 4000



www.phsupplyco.com

Georgia / Alabama

Ga. Phone: 800-836-8705

Al. Phone: 205-907-7074



Cleaning Nozzles

Recycled Water
Approved



Chisel

The **Chisel** Nozzle is a reliable sewer cleaning nozzle that is a must have! Sharp edges and multiple forward jets deliver powerful penetration to effectively open tough total blockages. A drill point can be added to the front of the Chisel as well.



Standard

Compact, lightweight and inexpensive are three words that sum up the **Standard** nozzle. Made from stainless steel with a spray angle of 20° makes this nozzle perfect for cleaning smaller pipes. A front jet for penetration is also available.



Rocket

Much like a **Rocket**, this nozzle has serious power behind it! The tight spray angle combined with one piece-ceramic inserts and 3D fluid mechanics produce incredible results. Constructed from hardened stainless steel, the powerful jet pattern created by the **Rocket** Nozzle 3D can flush dirt/mud, rocks, and any other large heavy material you may find in the sewer or storm pipe .



Egg

With its contoured **Egg** shaped design, this nozzle is perfect for mobility in the pipe. The smooth Egg shape combined with 20° rear propulsion jets enables the nozzle to slide easily down the pipe. 3D Fluid Mechanics deliver water that efficiently and effectively cleans while propelling the nozzle forward.



Cleaning

The 3D **Cleaning** nozzle is an excellent sewer cleaning nozzle for everyday use. Hardened stainless steel construction with 3D fluid mechanics and two different rear spraying angles of 15°/25° make this nozzle ideal for general pipe cleaning and preventative maintenance work. A forward spraying jet is also included. This nozzle comes standard with one-piece ceramic inserts.

*** Complete catalog available upon request ***



www.phsupplyco.com

Georgia / Alabama

Ga. Phone: 800-836-8705

Al. Phone: 205-907-7074



Recycled Water
Approved

Cleaning Nozzles



Extreme

Designed with small voids and offsets in mind, the **3D Extreme** nozzle is a worthy tool to have in your tool box. 3D fluid mechanics inside of the nozzle and one-piece ceramic inserts create a strong jet pattern with a spray angle of 11° resulting in exceptional cleaning and pulling power. One forward jet offers a penetration option as well.



FD2

Half or completely open drain pipes is what the **FD2** nozzle was designed for! The hardened stainless steel nozzle includes 3D fluid mechanics which provide it excellent cleaning and pulling power. At the same time, the one-piece ceramic inserts spray at an angle which prevents water from splashing upwards out of the channel.



Antiblaster

Smooth propulsion for shallow depths and pipes near homes, with a wide rear 37° degree spray angle, the **Antiblaster** is the perfect nozzle for reducing the chances of blowing toilets. Constructed from hardened stainless steel the nozzle is designed for cleaning shallow sewer lines and sewer lines adjacent to homes. The 3D fluid mechanics and one-piece ceramic inserts provide powerful cleaning and smooth propulsion. An optional front jet is also available.



Tri-Jet

The **Tri-Jet** 3D nozzle available in aluminum or stainless steel makes use of three different optimal rear spray angles, 7°/14°/21°. As an option, one of the spray angles can be blocked off all the way around the nozzle to focus the cleaning process on pulling, flushing or cleaning with the remaining two spray angles. This nozzle comes standard with one-piece ceramic inserts.



Large Rocket

Much like a **Rocket**, this nozzle has serious power behind it! The tight spray angle combined with the one piece-ceramic inserts and 3D fluid mechanics produce incredible results. Constructed from hardened stainless steel, the powerful jet pattern created by the **Rocket** nozzle 3D can flush dirt/mud, rocks, and any other large heavy material you may find in sewer or storm pipes.

*** Complete catalog available upon request ***



www.phsupplyco.com

Georgia / Alabama

Ga. Phone: 800-836-8705

Al. Phone: 205-907-7074



**Recycled Water
Approved**

Primus Nozzles

Primus I



Capable of controlled rotation, the **Primus** is very innovative and effective. This nozzle is built from hardened stainless steel and is extremely user-friendly because it requires no lubrication or replacement of the internal parts for at least 1 year. A rotating head removes grease, light scale, and light roots combined with 3D fluid mechanics in the propulsion unit flush the debris out producing the best cleaning results. *For use on 1/2" hose. 4"- 8" pipe.*

Primus II



Same as the **Primus I**, but designed for 3/4" & 1" hose. Requires no lubrication or replacement of the internal parts for at least 1 year. A rotating head removes grease, light scale, and light roots combined with 3D fluid mechanics in the propulsion unit flush the debris out producing the best cleaning results! *For use on 3/4" & 1" hose. 6"- 15" pipe.*

Primus III



Same as the **Primus II**, but designed for 1" & 1-1/4" hose with higher flow. Requires no lubrication or replacement of the internal parts for at least 1 year. A rotating head removes grease, light scale, and light roots combined with 3D fluid mechanics in the propulsion unit flush the debris out producing the best cleaning results! *For use on 3/4" & 1" hose. 6"- 15" pipe.*

Primus HD



Same as the **Primus I** nozzle, now made for high-pressure pumps - up to 10,000 PSI. This nozzle is built from hardened stainless steel and requires no lubrication or replacement of the internal parts for at least 1 year. A rotating head removes grease, light scale, and roots combined with 3D fluid mechanics in the propulsion unit flush the debris out producing the best cleaning results.

Primus Antiblaster



Designed to reduce the chances of blowing toilets, the **Primus Antiblaster** Nozzle 3D is a controlled rotating nozzle that is also low maintenance. The nozzle is built from hardened stainless steel and requires no maintenance or replacement of internal parts for at least one year. A rotating head removes grease, light scale and roots while the wide 42° rear spray angles in the propulsion unit clean / flush out debris. *For use on 3/4", 1" & 1-1/4" hose. 6'-24" pipe.*

*** Complete catalog available upon request ***



www.phsupplyco.com

Georgia / Alabama

Ga. Phone: 800-836-8705

Al. Phone: 205-907-7074



**Recycled Water
Approved**

Root Cutters

Pipe Wolf



The **Pipe Wolf** nozzle is an extremely aggressive specialty tool perfect for total blockages that are made from organic material. A hardened, tapered head with sharp edges utilizes turbine technology and spins approximately 10,000 rpm's, boring a hole and opening up most any blockage. This nozzle comes standard with one-piece ceramic inserts.



Mini-T Cutters

Mini T cutters are high efficient turbine tools made from hardened stainless steel for small pipes that are effective in removing roots, deposits and opening blockages. Being small in size enables the **Mini T** cutters to navigate around slight bends but most importantly these 1/2" cutters can be reduced to 3/8" and 1/4" for lower pump outputs.



Turbikit 3D

Open link chain is one difference that separates the **Turbikit** from other chain cutters offered by USB. Driven by a turbine technology, the high strength open link chain delivers extremely effective cutting power. The cutter can be used to remove roots and mineral deposits from the sewer pipe without a centralizing skid.



Diamond Face Cutter 3D

The **Diamond Face** cutter is an extremely aggressive specialty tool perfect for total blockages and some hardened mineral deposits. Turbine technology and 3D fluid mechanics spin a cutting head equipped with diamond bits and sharp edges approximately 10,000 rpm's boring a hole and opening the blockage.



Turbo I

The **Turbo I** rigid chain cutter was engineered to be powerful, durable, user friendly and require low maintenance. This cutter uses turbine technology in combination with 3D fluid mechanics to deliver unmatched cutting performance in its operating range. Roots, grease, and mineral deposits do not stand a chance against the **Turbo I**. Rigid skids are available from 4" to 6".

*** Complete catalog available upon request ***



www.phsupplyco.com

Georgia / Alabama

Ga. Phone: 800-836-8705

Al. Phone: 205-907-7074



Recycled Water
Approved

Turbo Nozzles

Turbo S400/S600



The **Turbo flexible** chain cutters are engineered to be powerful, durable, user friendly and require low maintenance. Made from high quality stainless steel and aluminum, this heavy-duty cutter uses turbine technology in combination with 3D fluid mechanics to deliver unmatched cutting performance in its operating range. Roots, grease, mineral deposits and protruding taps do not stand a chance against this impressive cutter.

The **Turbo S400** flexible guide skid is adjustable between 8" - 15."

The **Turbo S600** flexible guide skid is adjustable between 12" - 24."

Turbo II Flexible



The **Turbo II flexible** chain cutter was engineered to be powerful, durable, user friendly and require low maintenance. Made from high quality stainless steel and aluminum, this cutter uses turbine technology in combination with 3D fluid mechanics to deliver unmatched cutting performance in its operating range. Roots, grease, mineral deposits and protruding taps do not stand a chance against this impressive cutter. The flexible guide skid is adjustable between 6" - 12" within a 1/16" making it *capable of handling offsets in the pipe.*

Turbo III Flexible



The **Turbo III flexible** chain cutter was designed for more flow and for larger pipe. Made from high quality stainless steel and aluminum, this heavy-duty cutter uses turbine technology in combination with 3D fluid mechanics to deliver unmatched cutting performance. Roots, grease, mineral deposits and protruding taps do not stand a chance against this impressive cutter. The flexible guide skid is adjustable between 10" - 20"

An extension kit increases the cutters operation up to 32."

Uniflex Skid



Used for centralization in the pipe, the **Universal Flex** skid is continuously adjustable by 1/16" increments within its operating range. The front 1" NPT threads accommodate most cleaning, roto, and radial cleaning nozzles. *Includes high-pressure swivel.*

*** Complete catalog available upon request ***



www.phsupplyco.com

Georgia / Alabama

Ga. Phone: 800-836-8705

Al. Phone: 205-907-7074

Replacement Ceramic
Inserts available!

Warthog Nozzles

WT-3/8



This type of nozzle can be used for cleaning lines in many applications. This nozzle is an excellent choice for cutting roots, clearing ice, and removing blockages.

Available for 3" to 6" Lines
Flows from 5-12 GPM
Pressures up to 5000

WS-1/2



This type of nozzle can be used for cleaning lines in many applications. This nozzle can remove grease easily and cut through roots, ice and soil.

Available for 4" to 8" Lines
Flows from 8-20 GPM
Pressures up to 5000

WH-1/2 & 3/4



This nozzle is commonly used with small capacity combination trucks and large trailer jetters.

Available for 6" to 18" Lines
Flows from 10-45 GPM
Pressures up to 8000

WG-1 Classic



These nozzles are ideal to handle any municipal, industrial and commercial cleaning. These provide highly productive cleaning and eliminate the need for using multiple tools to complete a job.

Available for 8" to 36" Lines
Flows from 50-80 GPM
Pressures up to 5000

WHP-3/4 and WGP-1 Puller



The WHP-3/4 and WGP-1 are designed to produce up to 40% more pulling power than our WH-3/4 and WG-1 Classic. The rear facing jets are angled more sharply and the centralizer fins have been streamlined.

Available for 8" to 36" Lines
Flows from 50-80 GPM
Pressures up to 5000

*** Rebuild kits Available ***



www.phsupplyco.com

Georgia / Alabama

Ga. Phone: 800-836-8705

Al. Phone: 205-907-7074

Extensions and Skids



Tube Style Nozzle Extension

Available in 1/2", 3/4" & 1"
For any size pipe



Four Finned Nozzle Skid

Available in 1/2", 3/4" & 1"
For pipe sizes 4" to 15"



Six Wire Nozzle Skid

Available in 1/2", 3/4" & 1"
For pipe sizes 4" to 20"



Four Wire Nozzle Skid

Available in 1/2", 3/4" & 1"
For pipe sizes 4" to 12"



Football Style Nozzle Skid

Available in 1/2", 3/4" & 1"
For pipe sizes 4" to 12"



www.phsupplyco.com

Georgia / Alabama

Ga. Phone: 800-836-8705

Al. Phone: 205-907-7074

Chain / Root Cutters & Kits



Hi-Torque Root Cutter Kit

Kit includes: Motor , 6", 8", 10" & 12"
Skids and Saws, Tool Box , Hardware Kit & Instructions.
**Shown with heavy duty skids*



Lateral Root Cutter Kit

Kit includes: Motor, 3 Skids & Saws
Toolbox, Hardware Kit & Instructions.
Available in 3", 4", 6" & 8"



Hi-Torque Hydraulic Motor

Produces more than 200 lbs of torque.
Available in 3/4" & 1"
**Blades and skids sold separately*



Lateral Root Cutter Motor

Smaller Hydraulic Motor with 5/8" diameter shaft.
For use in 3"-8" lines.
Available in 1/2" & 3/4"



Chain Cutter Kit

Kit includes: Chain Cutter 8", 12" & 16"
Ring Chain & Motor Chain, 18" Ring Chain with
Blade, 8"-18" Adjustable Skid & Carrying Case.



Chain Cutter

40 - 100 GPM up to 2,500 PSI
3 Jets @ 90° on spin - 6 @ 25° on rear .

** Replacement chain available upon request **



www.phsupplyco.com

Georgia / Alabama

Ga. Phone: 800-836-8705

Al. Phone: 205-907-7074

Root Cutter Attachments



Carbide Tooth Concave Root Saw Blade

Available in 6", 8", 10", 12", 15" & 18"

Flat blades available upon request



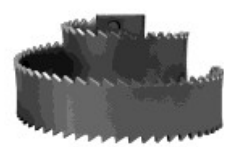
Heavy Duty Concave Root Saw Blade

Available in 3", 4", 5", 6", 8", 10", 12", 15", 18" & 20"



Heavy Duty Flat Root Saw Blade

Available in 3", 4", 5", 6", 8", 10", 12", 15", 18" & 20"



Heavy Duty Spiral Root Saw Blade

Available in 4", 5", 6", 8", 10", 12", 15" & 18"



Super Duty Root Saw

3 Spoke with 1" Hub
Available in 12", 15", 20", 22" & 24"



Arrow Diamond Tip Cutter

Available in 6", 8", 10", 12" & 15"



Root Cutter Hub

Available in 1" & 3/4"
Fits all models



Blade Cutter Chuck

Available in 1" & 3/4"
Fits all models



PVC Lateral Cutter

Used to cut PVC pipe
Available in 6", 8", 10", 12" & 15"



Diamond Lateral Cutter

Used to cut concrete or clay pipe
Available in 6", 8", 10", 12" & 15"



Curved Heavy Duty Blades

Comes in sets of 3
Available in 4"- 18"



Cable Cutter Tool Kit

Kit includes choice of 3 Cable Cutters 6" - 30", Cutter Blade & Chuck



www.phsupplyco.com

Georgia / Alabama

Ga. Phone: 800-836-8705

Al. Phone: 205-907-7074



Sewer & Jetting/Lateral Line Hoses

Applications, Temperature, Construction, Features & Advantages and Lengths

Applications:

- **High Pressure Sewer Cleaning** - Applications for commercial, industrial and residential.
- **Tight Pipe Bends** - Slick, Slither® cover affords an easier handling hose to get the job done.
- **Jetting/Lateral Line** - Used for jetting equipment.

Temperature:

- **Hose Temperature Range** - For the diameters of 1/2", 5/8", 3/4", 1", 1 1/4" and 1 1/2" is -40°F (-40°C) to +150°F (+66°C).
- **Hose Temperature Range** - For the diameters of 1/8", 3/16", 1/4" and 3/8" is -40°F (-40°C) to +160°F (+71°C).

Construction:

- **Inner Tube** - Yellow Polyolefin. (Sewer Cleaning Hoses, 2,500 & 3,000 PSI) Yellow seamless thermoplastic. (Jetting/Lateral Line Hoses, 4,000 & 5,000 PSI)
- **Reinforcement** - High tensile one or two synthetic fiber braids.
- **Cover** - Abrasion resistant polyether-urethane. (Standard)
- **Slither®** - Polyether-urethane low coefficient of friction. (Optional)

Features & Advantages:

- **Materials** - Constructed to provide rugged and reliable service under the most severe and demanding conditions.
- **Yellow Color Tube** - Assures the user that they are using a WASTEC designated Piranha Hose Product.
- **Polyolefin or Seamless Thermoplastic Tube** - Provides maximum resistance to hydrolysis.
- **High Tensile One or Two Synthetic Fiber Braids** - Contributes to low volumetric expansion and eliminates loss of strength from moisture absorption.
- **Abrasion Resistant Polyether-Urethane** - Polyurethane cover provides exceptional cut, abrasion and fungus resistance.
- **Slither® Cover** - Cover is ultra slippery; allows hose to maneuver around and through difficult sewer bends.
- **Pressure Testing** - All Piranha factory-assembled hoses are 100% pressure tested.
- **Reel Installation** - Ideal for truck and trailer mounts.

Industry Standards:

- **Orange Cover** = 2,500 PSI
- **Blue Cover** = 3,000 PSI
- **Green Cover** = 4,000 PSI
- **Black Cover** = 4,000 PSI (High Burst)
- **Red Cover** = 5,000 PSI

Lengths:

- **Stock Lengths** - 400, 500, and 600 foot rolls.
- **Custom Lengths** - Available and made to order.
- **Jetting/Lateral Lines** - Available for bulk and/or assemblies.



FOR AVAILABILITY OF PRODUCTS AND SIZES SHOWN, PLEASE REFER TO THE BACK PAGE FOR YOUR NEAREST STOCKING LOCATION.
BECAUSE WE CONTINUALLY EXAMINE WAYS TO IMPROVE OUR PRODUCTS, WE RESERVE THE RIGHT TO ALTER SPECIFICATIONS OR DISCONTINUE PRODUCTS WITHOUT PRIOR NOTICE.





Jetting/Lateral Line Hose



4,000 PSI
Series - LLGR



A yellow seamless thermoplastic tube, double high tensile synthetic fiber braid reinforcement and abrasion resistant green polyether-urethane cover.

NOMINAL SPECIFICATIONS

SERIES NUMBER	NOMINAL I.D.		NOMINAL O.D.		MAX. OPERATING PRESSURE		MIN. BURST PRESSURE		MIN. BEND RADIUS		Weight LBS/FT
	INCHES	MM	INCHES	MM	PSI	BAR	PSI	BAR	INCHES	MM	
LLGR-02	1/8	3.6	0.32	8.2	4,000	275.8	10,000	689.5	1.25	31.2	0.04
LLGR-03	3/16	4.8	0.41	10.5	4,000	275.8	10,000	689.5	1.75	44.5	0.05
LLGR-04	1/4	6.4	0.50	12.6	4,000	275.8	10,000	689.5	2.50	63.5	0.06
LLGR-06	3/8	9.7	0.65	16.5	4,000	275.8	10,000	689.5	3.00	76.2	0.11
LLGR-08	1/2	12.8	0.83	21.2	4,000	275.8	10,000	689.5	4.00	101.6	0.16

MADE IN USA



HIGH BURST
4,000 PSI
Series - SHBK, LHBK



A yellow seamless thermoplastic tube, double high tensile synthetic fiber braid reinforcement and abrasion resistant black polyether-urethane cover.

NOMINAL SPECIFICATIONS

SERIES NUMBER	NOMINAL I.D.		NOMINAL O.D.		MAX. OPERATING PRESSURE		MIN. BURST PRESSURE		MIN. BEND RADIUS		Weight LBS/FT
	INCHES	MM	INCHES	MM	PSI	BAR	PSI	BAR	INCHES	MM	
SHBK-08	1/2	12.7	0.87	22.1	4,000	275.8	12,000	827.4	3.00	76.2	0.20
SHBK-10	5/8	15.9	0.91	23.0	4,000	275.8	12,000	827.4	4.00	101.6	0.16
LHBK-08	1/2	12.7	0.80	20.3	4,000	275.8	16,000	1103.2	4.00	101.6	0.15

Note: Series LHBK-08 and SHBK-10 have a single high tensile synthetic fiber braid.

MADE IN USA



5,000 PSI
Series - LLRD



A yellow seamless thermoplastic tube, double high tensile synthetic fiber braid reinforcement and abrasion resistant red polyether-urethane cover.

NOMINAL SPECIFICATIONS

SERIES NUMBER	NOMINAL I.D.		NOMINAL O.D.		MAX. OPERATING PRESSURE		MIN. BURST PRESSURE		MIN. BEND RADIUS		Weight LBS/FT
	INCHES	MM	INCHES	MM	PSI	BAR	PSI	BAR	INCHES	MM	
LLRD-04	1/4	6.4	0.50	12.6	5,000	344.7	12,500	861.8	2.50	63.5	0.05
LLRD-06	3/8	9.7	0.65	16.5	5,000	344.7	12,500	861.8	3.00	76.2	0.13
LLRD-08	1/2	12.8	0.80	20.2	5,000	344.7	12,500	861.8	4.00	101.6	0.13

Note: Series LLRD-08 has a single high tensile synthetic fiber braid.

MADE IN USA



FOR AVAILABILITY OF PRODUCTS AND SIZES SHOWN, PLEASE REFER TO THE BACK PAGE FOR YOUR NEAREST STOCKING LOCATION. BECAUSE WE CONTINUALLY EXAMINE WAYS TO IMPROVE OUR PRODUCTS, WE RESERVE THE RIGHT TO ALTER SPECIFICATIONS OR DISCONTINUE PRODUCTS WITHOUT PRIOR NOTICE.



Piranha "Ready-To-Go" Stock Length Hose Assemblies

If you don't see what you need, please refer to page 11 for your "Made-To-Order" assembly length ordering instructions.

2,500 PSI



SERIES SPOR - ORANGE COVER

PART NUMBER	SIZE CODE	HOSE I.D. (INCHES)	MALE NPTF NOM. THREAD SIZE	WORKING PRESSURE (MAX PSI)	ASSEMBLED LENGTH FT.
SPOR-MM12X400	12	3/4	3/4 - 14	2,500	400
SPOR-MM12X500	12	3/4	3/4 - 14	2,500	500
SPOR-MM12X600	12	3/4	3/4 - 14	2,500	600
SPOR-MM16X400	16	1	1-11 1/2	2,500	400
SPOR-MM16X500	16	1	1-11 1/2	2,500	500
SPOR-MM16X600	16	1	1-11 1/2	2,500	600
SPOR-MM16X800	16	1	1-11 1/2	2,500	800
SPOR-MM20X600	20	1 1/4	1 1/4 - 11 1/2	2,500	600

MADE IN USA

3,000 PSI



SERIES HPBU - BLUE COVER

PART NUMBER	SIZE CODE	HOSE I.D. (INCHES)	MALE NPTF NOM. THREAD SIZE	WORKING PRESSURE (MAX PSI)	ASSEMBLED LENGTH FT.
HPBU-MM12X400	12	3/4	3/4 - 14	3,000	400
HPBU-MM12X500	12	3/4	3/4 - 14	3,000	500
HPBU-MM12X600	12	3/4	3/4 - 14	3,000	600
HPBU-MM16X500	16	1	1-11 1/2	3,000	500
HPBU-MM16X600	16	1	1-11 1/2	3,000	600
HPBU-MM16X800	16	1	1-11 1/2	3,000	800

MADE IN USA

4,000 PSI



SERIES SHBK - BLACK COVER

PART NUMBER	SIZE CODE	HOSE I.D. (INCHES)	MALE NPTF NOM. THREAD SIZE	WORKING PRESSURE (MAX PSI)	ASSEMBLED LENGTH FT.
SHBK-MM08X400	08	1/2	1/2 - 14	4,000	400
SHBK-MM08X500	08	1/2	1/2 - 14	4,000	500
SHBK-MM08X600	08	1/2	1/2 - 14	4,000	600

MADE IN USA



FOR AVAILABILITY OF PRODUCTS AND SIZES SHOWN, PLEASE REFER TO THE BACK PAGE FOR YOUR NEAREST STOCKING LOCATION. BECAUSE WE CONTINUALLY EXAMINE WAYS TO IMPROVE OUR PRODUCTS, WE RESERVE THE RIGHT TO ALTER SPECIFICATIONS OR DISCONTINUE PRODUCTS WITHOUT PRIOR NOTICE.



Fittings & Accessories for Piranha Hoses

End fittings and menders for thermoplastic hose are not interchangeable. It is essential that hose, end fittings, menders and tooling are properly matched. Identification of Piranha Hose Products is simple. The inner tube of all Piranha sewer cleaning hose is yellow, as assigned by WASTEC (Waste Equipment Technology Association) to the manufacturer's identification code. To assure proper matching of all components, the hose tube material, end fittings, menders and tooling should be purchased directly from Piranha Hose Products, Inc.



MALE FITTINGS

PART NO.	USE WITH HOSE SERIES	WEIGHT
F06NPT6	LLGR, SLGR-06	.17 LBS
F08NPT8	LLBU, SLBU, LLGR, SLGR, LLRD, SLRD, LHBK, SLLHBK-08	.36 LBS
F10NPT8	SPOR, SLSPOR-10	.36 LBS
F12NPT12	SPOR, SLSPOR, HPBU, SLHPBU-12	.43 LBS
F16NPT16	SPOR, SLSPOR, HPBU, SLHPBU-16	.71 LBS
F20NPT20	SPOR, SLSPOR-20	1.00 LBS
F24NPT24	SPOR, SLSPOR-24	2.52 LBS
FAR08NPT8	LAGR-08	.34 LBS
FAR10NPT8	SAOR-10	.42 LBS
FAR12NPT12	SAOR, HABU-12	.49 LBS
FAR16NPT16	SAOR, HABU-16	.79 LBS
FAR20NPT20	SAOR-20	1.03 LBS
FHP08NPT8	SHBK, SLSHBK-08	.28 LBS
FHP10NPT8	SHBK, SLSHBK-10	.34 LBS



FEMALE ADAPTER FITTINGS

PART NO.	USE WITH HOSE SERIES	WEIGHT
A06FPX06FS	LLGR, SLGR-06	.16 LBS
A08FPX08FS	LLBU, SLBU, LLGR, SLGR, LLRD, SLRD, SHBK, SLSHBK, LHBK, SLLHBK, LAGR-08 & SPOR, SLSPOR, SHBK, SLSHBK, SAOR-10	.21 LBS
A12FPX12FS	SPOR, SLSPOR, HPBU, SLHPBU-12	.34 LBS



FEMALE FITTINGS

PART NO.	USE WITH HOSE SERIES	WEIGHT
F08FS8	LLBU, SLBU, LLGR, SLGR, LHBK, SLLHBK-08	.29 LBS
F12FS12	SPOR, SLSPOR, HPBU, SLHPBU-12	.52 LBS
F16FS16	SPOR, SLSPOR, HPBU, SLHPBU-16	.81 LBS
FAR08FS8	LAGR-08	.38 LBS
FAR12FS12	SAOR, HABU-12	.60 LBS
FAR16FS16	SAOR, HABU-16	.90 LBS
FHP08FS8	SHBK, SLSHBK-08	.32 LBS



DIES

PART NO.	USE WITH HOSE SERIES	WEIGHT
DS06	LLGR, SLGR-06	2.29 LBS
DS08	LLBU, SLBU, LLGR, SLGR, LHBK, SLLHBK-08	2.19 LBS
DS085	LLRD, SLRD-08	2.20 LBS
DS10	SPOR, SLSPOR-10	1.87 LBS
DS12	SPOR, SLSPOR, HPBU, SLHPBU-12	1.99 LBS
DS16	SPOR, SLSPOR, HPBU, SLHPBU-16	1.74 LBS
DS20	SPOR, SLSPOR-20	1.39 LBS
DSAR08	LAGR-08	2.13 LBS
DSAR12	SAOR, HABU-12	1.9 LBS
DSAR10	SAOR-10	1.97 LBS
DSAR16	SAOR, HABU-16	1.63 LBS
DSAR20	SAOR-20	1.21 LBS
DSHP08	SHBK, SLSHBK-08	2.15 LBS
DSHP10	SHBK, SLSHBK-10	2.18 LBS



MALE SWIVEL FITTING

PART NO.	USE WITH HOSE SERIES	WEIGHT
F06MSNPT6	LLGR, SLGR-06	.21 LBS



FOR AVAILABILITY OF PRODUCTS AND SIZES SHOWN, PLEASE REFER TO THE BACK PAGE FOR YOUR NEAREST STOCKING LOCATION. BECAUSE WE CONTINUALLY EXAMINE WAYS TO IMPROVE OUR PRODUCTS, WE RESERVE THE RIGHT TO ALTER SPECIFICATIONS OR DISCONTINUE PRODUCTS WITHOUT PRIOR NOTICE.



Fittings & Accessories for Piranha Hoses & Swaging Equipment

MALE PUSHERS



PART NO.	USE WITH HOSE SERIES	WEIGHT
DPT06	LLGR, SLGR-06	2.33 LBS
DPT08	LLBU, SLBU, LLGR, SLGR, LLRD, SLRD, LHBK, SLLHBK, SHBK, SLSHBK-08 & SHBK, SLSHBK, SPOR, SLSPOR-10	2.23 LBS
DPT12	SPOR, SLSPOR, HPBU, SLHPBU-12	2.11 LBS
DPT16	SPOR, SLSPOR, HPBU, SLHPBU-16	1.81 LBS
DPT20	SPOR, SLSPOR-20	1.66 LBS
DPTAR08	LAGR-08	2.19 LBS
DPTAR10	SAOR-10	2.19 LBS
DPTAR12	SAOR, HABU-12	2.07 LBS
DPTAR16	SAOR, HABU-16	1.77 LBS
DPTAR20	SAOR-20	1.39 LBS

FEMALE PUSHERS



PART NO.	USE WITH HOSE SERIES	WEIGHT
DPT08FS	LLBU, SLBU, LLGR, SLGR, LHBK, SLLHBK, SHBK, SLSHBK-08	2.18 LBS
DPT12FS	SPOR, SLSPOR, HPBU, SLHPBU-12	1.87 LBS
DPT16FS	SPOR, SLSPOR, HPBU, SLHPBU-16	2.18 LBS
DPTAR08FS	LAGR-08	2.75 LBS
DPTAR12FS	SAOR, HABU-12	2.47 LBS
DPTAR16FS	SAOR, HABU-16	2.1 LBS

NOTE: THE USE OF FITTINGS AND ASSEMBLY TOOLING OTHER THAN THAT SUPPLIED BY PIRANHA HOSE PRODUCTS IS AT THE RISK AND LIABILITY OF THE USER.

MENDERS



PART NO.	USE WITH HOSE SERIES	WEIGHT
F08MEND	SHBK, SLSHBK-08	.34 LBS
F10MEND	SPOR, SLSPOR-10	.34 LBS
F12MEND	SPOR, SLSPOR, HPBU, SLHPBU-12	.54 LBS
F16MEND	SPOR, SLSPOR, HPBU, SLHPBU-16	.77 LBS
F20MEND	SPOR, SLSPOR-20	1.22 LBS
FAR08MEND	LAGR-08	.39 LBS
FAR12MEND	SAOR, HABU-12	.69 LBS
FAR16MEND	SAOR, HABU-16	.98 LBS
FLL08MEND	LLBU, SLBU, LLGR, SLGR, LHBK, SLLHBK-08	.32 LBS
FA10MEND	SHBK, SLSHBK-10,	.44 LBS

HORIZONTAL SWAGE TOOL

A PIRANHA SUPPLIED SWAGING MACHINE IS REQUIRED FOR THE INSTALLATION OF END FITTINGS AND MENDERS. ALL ASSEMBLY TOOLING IS DESIGNED AND PRODUCED TO BE COMPATIBLE WITH THE PIRANHA HOSE PRODUCTS SUPPLIED SWAGING MACHINES.

PART NO.	WEIGHT
SWAGE HAND	25.5 LBS



HAND OPERATED HYDRAULIC SWAGING MACHINE

PART NO.	WEIGHT
SWAGE-HYDSALES	59 LBS



FOR AVAILABILITY OF PRODUCTS AND SIZES SHOWN, PLEASE REFER TO THE BACK PAGE FOR YOUR NEAREST STOCKING LOCATION. BECAUSE WE CONTINUALLY EXAMINE WAYS TO IMPROVE OUR PRODUCTS, WE RESERVE THE RIGHT TO ALTER SPECIFICATIONS OR DISCONTINUE PRODUCTS WITHOUT PRIOR NOTICE.





Cautionary Statement

All products sold and distributed by Piranha Hose Products are in the nature of commodities and they are sold by published specifications and not for particular purposes, uses, or application. Purchaser shall first determine their suitability for the intended purposes, uses or applications and shall either conduct its own engineering studies or tests, or retain qualified engineers, consultants or testing laboratories and consult with them before determining the proper use, suitability or propriety of the merchandise or Products for the intended purposes, uses, or applications.

Piranha Hose Products ("Seller") does not recommend that the Products for any particular purpose, use or application, and the Purchaser or user thereof shall assume full responsibility for the suitability, propriety, use and application of the Products. Purchaser shall follow all instructions contained in Seller's catalogs, brochures, technical bulletins and other documents regarding the Products. The Products, including but not limited to, hose, tubing or couplings, may fail due to the use or conveyance of substances at elevated or lowered temperature or at excessive pressure, the conveyance of abrasive, injurious, flammable, explosive, or damaging substances.

Hose or tubing used in bent configurations will be subjected to increased abrasion. Hose clamps or couplings may loosen after initial installations and all sections of hose and tubing including connections, couplings, clamps, conductivity and bonding should be inspected frequently, regularly, consistently, and should be replaced, adjusted or re-tightened for the avoidance of leakage, for the prevention of injuries or damages, and for general safety purposes. Except as indicated in its Limited Warranty, Seller shall not be liable or responsible for direct or indirect injuries or damages caused by or attributed to the failure or malfunction of any Products sold or distributed by it.

Purchasers or users of the Products should frequently and consistently undertake inspections and protective measures with respect to the use and application of Products, which should include the examination of tube and cover, conditions of the hose or tubing, and the identification, repair or replacement of sections showing cracking, blistering, separations, internal and external abrasions, leaking or slipped couplings or connections and make proper proof tests.

Limited Warranty

The Products sold or distributed by Seller are warranted to its customers to be free from defects in material and workmanship at the time of shipment by us, subject to the following provisions. ALL WARRANTY CLAIMS SHALL BE MADE WITHIN SIX (6) MONTHS AFTER SELLER SHIPPED THE PRODUCTS. SELLER'S LIABILITY HEREUNDER IS LIMITED AT SELLER'S EXCLUSIVE DISCRETION, TO 1) THE PURCHASE PRICE OF ANY PRODUCTS PROVIDING DEFECTIVE; 2) REPAIR OF ANY DEFECTIVE PRODUCT OR PART THEREOF; OR 3) REPLACEMENT OF ANY DEFECTIVE PRODUCT OR PART UPON ITS AUTHORIZED RETURN TO SELLER.

THIS WARRANTY IS IN LIEU OF AND EXCLUDES ALL OTHER WARRANTIES, EXPRESSED, IMPLIED, STATUTORY, OR OTHERWISE CREATED UNDER APPLICABLE LAW INCLUDING, BUT NOT LIMITED TO, THE WARRANTY OF MERCHANTABILITY AND THE WARRANTY OF FITNESS FOR A PARTICULAR PURPOSE. IN NO EVENT SHALL SELLER OR THE MANUFACTURER OF THE PRODUCT BE LIABLE FOR SPECIAL, INCIDENTAL, OR CONSEQUENTIAL DAMAGES INCLUDING LOSS OF PROFITS, WHETHER OR NOT CAUSED BY OR RESULTING FROM THE NEGLIGENCE OF SELLER AND/OR THE MANUFACTURER OF THE PRODUCT, UNLESS SPECIFICALLY PROVIDED HEREIN. IN ADDITION, THIS WARRANTY SHALL NOT APPLY TO ANY PRODUCTS OR PORTIONS THEREOF WHICH HAVE BEEN SUBJECTED TO ABUSE, MISUSE, IMPROPER INSTALLATION, MAINTENANCE, OR OPERATION, ELECTRICAL FAILURE OR ABNORMAL CONDITIONS, AND TO PRODUCTS WHICH HAVE BEEN TAMPERED WITH, ALTERED, MODIFIED, REPAIRED, REWORKED BY ANYONE NOT APPROVED BY SELLER, OR USED IN ANY MANNER INCONSISTENT WITH THE PROVISIONS OF THE "CAUTIONARY STATEMENT" ABOVE OR ANY INSTRUCTIONS OR SPECIFICATIONS PROVIDED WITH OR FOR THE PRODUCT.

10/2009



TruSense
displays

RIDGID

TruSense
technology

See Snake Standard

See Snake Mini

Locator

Sonde

See Snake
Micro Drain



The **SeeSnake** is equipped with the largest diameter camera head. It is your go-to machine for inspecting long runs in main sewer laterals. Available TruSense technology provides a high dynamic range (HDR) image sensor and two-way communication link between the camera head and **SeeSnake CSx** series Wi-Fi enabled monitors.

The **SeeSnake Mini** with TruSense provides down pipe visibility, vastly improved with High Dynamic Range (HDR), giving more clearly defined details of the pipe characteristics. The rugged, high-intensity LEDs provide exceptional viewing and longer life. The self-leveling camera head keeps the image upright (certain models) Powerful FleXmitter® sonde has long range and preserves the camera's ability to make turns. High Dynamic Range (HDR) image sensor offers bright, clear in-pipe imaging in difficult lighting conditions. TiltSense displays the camera's pitch in a pipe on a connected **SeeSnake CSx** series monitor.

SeeSnake Standard

- The SeeSnake Standard camera reel offers unmatched reliability and performance in a ruggedized package.
- Now available with TruSense™ technology.
- The Standard has the stiffest push cable and is available in lengths up to 325' (99 m) – making it perfect for long runs, particularly in larger pipes with fewer turns.
- Rugged, high-intensity LEDs for exceptional viewing and long life.
- Self-leveling camera head keeps the image upright.
- Powerful FleXmitter® sonde has long range and preserves the camera's ability to make turns.
- High dynamic range (HDR) image sensor offers bright, clear in-pipe imaging in difficult lighting conditions.
- TiltSense displays the camera's pitch in a pipe on a connected SeeSnake CSx series monitor.

SeeSnake Mini

- The SeeSnake Mini camera reel is the smaller version of the SeeSnake Standard system.
- Now available with TruSense™ technology.
- The Mini's moderately stiff 200' (61m) push cable strikes a good balance between stiffness and the ability to navigate turns.
- Rugged, high-intensity LEDs for exceptional viewing and long life.
- Self-leveling camera head keeps the image upright.
- Powerful FleXmitter® sonde has long range and preserves the camera's ability to make turns.
- High dynamic range (HDR) image sensor offers bright, clear in-pipe imaging in difficult lighting conditions.
- TiltSense displays the camera's pitch in a pipe on a connected SeeSnake CSx series monitor.



www.phsupplyco.com

Georgia / Alabama

Ga. Phone: 800-836-8705

Al. Phone: 205-907-7074

RIDGID Accessories



NaviTrack Scout

This locator is designed to solve the most demanding remote transmitter (sonde) locates using multi-directional locating technology. Features multi-directional antenna technology that sees the entire signal all of the time. No nulls or false peaks to complicate the locate. Depth is automatically calculated and displayed when over the target.



NaviTrack II

This locator provides unprecedented ease-of-use for locating underground pipes. NaviTrack II's advanced technology greatly reduces training time. You can locate SeeSnake in-line transmitters, remote transmitters (sondes), and energized metallic lines. These can be approached from any direction for faster, more accurate locates.



NaviTrack Brick

The NaviTrack Brick is used to trace buried cable, TV lines, phone lines and other metallic lines which can carry an electromagnetic signal. Its lightweight design makes it easy to carry. Includes conductive ground rod and two 10' connectors.



NaviTrack Line Transmitter

The NaviTrack Brick is used to trace buried cable, TV lines, phone lines and other metallic lines which can carry an electromagnetic signal. Includes conductive ground rod and two 25' coiled connectors. **Optional** inductive signal clamp.



Remote Transmitter

This transmitter can be attached to a drain cleaning cable or a water jet hose to locate the remote transmitter in a line. Includes a flashing LED that indicates the sonde is transmitting. Meets FCC Class B and EN 55022 Class B requirements.



Floating Transmitter

This transmitter is used for locating underground structures like septic tanks. It is flushable, battery-powered, and has a flashing LED that indicates the sonde is transmitting.



Pipe Guides / Roller Dolly

The ball guides are used to hold the camera off the bottom of the pipe and to help keep the camera centered. The Roller Dolly is useful in larger pipes and designed for long straight inspections.



www.phsupplyco.com

Georgia / Alabama

Ga. Phone: 800-836-8705

Al. Phone: 205-907-7074

Jet Cam

Portable Mainline System



The **Jet Cam Portable Mainline System** can be easily used with any existing sewer jetter. It uses the jetters water pressure system to propel the camera down the sewer line as far as the sewer hose can reach.

The Durable Pelican case comes standard with a 10.4" LCD monitor, and a DVR recorder that records directly to an SD card. It has a built-in light dimmer.

Comes with heavy duty electric rewind reel and 6" & 8" skids for televising pipe. Expandable up to 24."

System includes:

- Pelican Heavy Duty carrying case
- 10" LCD monitor
- DVR w/SD Card
- Internal Battery w/Charger
- Color Camera
- Heavy Duty electric reel with speed control
- Up to 500' soft cable
- Jet Eye body and thrust nozzle
- 6" and 8" skids

Options available:

- Sun viewable LCD screen
- Option light ring
- 600' jet cable
- 10" and larger skids
- Push reel with up to 300' of cable.



www.phsupplyco.com

Georgia / Alabama

Ga. Phone: 800-836-8705

Al. Phone: 205-907-7074

Portable Jetters

Small Powerful Jetters for Unstopping Sewer lines 2" - 6"
and Pressure Washing Graffiti / Parking lots.

Options

- Portable Jetters rated 1500-4000psi
- Flows available from 2 - 5 gpm
- 13 Hp Honda engine or Electric powered
- Heavy Duty Triplex plunger pump with stainless steel valves.
- Pumps handle fluids up to 160° degrees
- Compact Frame Dimensions
- Power Pulse Feature available
- Adjustable pressure
- 3/8" x 200' Jetter hose
- Powder coated frame
- Heavy Duty Tires & Rims
- Removable reel with shut off valve (Some models)
- 3 Year warranty on Engine
- 5 Year warranty on Pump
- Lifetime warranty on frame welds
- Toolbox Style and Electric models available



PN: PJ-4/3000HD



PN: PJ-4/3000C



Toolbox Jetter

PN: PJ-4/3000B



PN: PJ-4/3000

*** Call for more detailed information and specifications ***



www.phsupplyco.com

Georgia / Alabama

Ga. Phone: 800-836-8705

Al. Phone: 205-907-7074

High Performance Jetters



3510 FC



3518 SC



7030 SC



7040 SC



3540 SC

Standard Options:

- GPMS up to 65
- Pressures from 2000 to 4000
- Rotating hose reel (most models)
- Variable speed control
- Hose sizes 1/2" to 1"
- UV polyethylene tanks
- Manway w / screen
- Toolbox
- One Flusher Nozzle
- One Penetrator Nozzle
- Air purge system
- 12V Power supply outlet
- Level wind guide
- Leader hose
- Murphy shutdown system (most models)

Available Options:

- Arrowboard
- Fixed Strobe Light
- Fixed rotating beacon light
- Side panels painted
- Pintle hitch
- Wireless remote option
- Level wind guide with counter
- Washdown gun with 25' hose
- Cold weather recirculation
- 25' fill hose
- Steel or Aluminum diamond plate tank shroud
- 3" by 36" tiger tail
- Auto level wind guide
- Low water shut down
- Camera system

*** Government funding available! Call for more information ***



www.phsupplyco.com

Georgia / Alabama

Ga. Phone: 800-836-8705

Al. Phone: 205-907-7074



High Performance Truck Mount Jetter



Standard Options:

- 65-110 HP Cummins diesel engine
- Triplex Pump 18-65 GPM @ 2000-4000 PSI
- Swinger Reel—190° Pivot
- 700 Gallon Polyethylene Tank
- High-Impact Thermoplastic Sewer Hose
- Two nozzles: Penetrator & Flusher
- Tool tray / catwalks with skirting
- PVC tank drain valve with stainless steel strainer
- Direct driven “live” hydraulic system w/17 gal. tank
- 17-gallon fuel tank with cap-mounted gauge
- Air purge system
- 20’ Leader hose contrasting color
- Level wind guide
- Two (2) aux 12V power supply outlets
- 2” PVC fill pipe

Available Options:

- 100’ or 200’ 3/4” Extra Hose on Main Reel
- Anti-Freeze System
- Arrow Board
- Auto Level Wind Guide Mounted
- Cone Holder Only
- Custom Decals (two)
- Foot Control Swinger
- Garden Hose Reel 1/2” - 50’
- IntelACount
- Level Wind Guide w/Counter
- Low Water Shutdown
- Paint—Custom (Paint Code Required)
- Paint—Safety Yellow or White Enamel
- Recirculation System
- Wireless Remote

*** Government funding available! Call for more information ***



www.phsupplyco.com

Georgia / Alabama

Ga. Phone: 800-836-8705

Al. Phone: 205-907-7074

B-6 SERIES



General Specifications:

- 6 cu. yd. capacity
- Hydraulic power up/down debris tank
- 45° dumping angle
- Self aligning closure seal
- Top-hinged full opening rear door
- Two 5" liquid level sight eyes
- Debris deflector plate
- Double strainer for rear door
- Four mechanical rear door locks
- Rear door power up/down cylinder
- Stainless steel ball check valve
- 6" quick opening rear door valve
- Triplex reciprocating
- 35-45 GPM @ 2000 psi
- PolyChain drive for quitter operation
- Wash down gun connection with 35' hose
- 800 PSI (55 bar) relief valve
- Split shaft transfer case
- Pneumatic shifting
- Rear mounted
- 180° hydraulic articulation
- Automatic positioning lock
- 650' x 3/4" hose capacity
- Reel speed control valve
- Hose level wind
- Pneumatic foot control valve
- Automatic positioning lock
- Vacuum/pressure gauge
- Tachometer
- 270° hydraulic rotation
- Portable pendant, controls all functions
- 6" extra heavy duty rubber intake hose
- Extends to 14.5' from base
- Positive displacement exhaust
- 2100 CFM (3568m³/hr) operating capacity
- Belt drive
- Muffler Drive
- Micro-filter/centrifugal separator
- Vacuum relief valve
- 500 gal. usable capacity
- 3/8" UV stabilized polyethylene
- Saddle tanks independent of debris tank
- 2 liquid level indicators
- Removable inspection covers
- 6" x 8' aluminum extension tube
- 6" x 6' aluminum intake tube
- 15" penetrator nozzle
- 35" flushing nozzle
- Manhole hose guide
- Two side tool boxes
- Tube storage carriers on front bumper

*** Government funding available! Call for more information ***



www.phsupplyco.com

Georgia / Alabama

Ga. Phone: 800-836-8705

Al. Phone: 205-907-7074



550VX



FT150VX



850DV



1300VX



850VX



1300V

Proven performance, built to last.

Ring-O-Matic's product line has a strong reputation for reliability and easy-of-use, offering a wide variety of vacuum excavation equipment with collection tank sizes from 150 to 3000 gallons with CAT diesel engine options up to 83 horsepower.

Ring-O-Matic is committed to make the best vacuum excavation equipment and pit-cleaners in the world and do it in a way that provides honest value along with superb service to our customers while continuing to earn our reputation as the industry's leading innovator.

*** Government funding available! Call for more information ***



www.phsupplyco.com

Georgia / Alabama

Ga. Phone: 800-836-8705

Al. Phone: 205-907-7074



C201



City Cat 5006



VT802



RS655



VT652



ES351

Every product serves a purpose, each built to perform.

When it comes to street sweeping, Johnston offers a range of street sweepers that are proven performers in collecting more debris at the highest level of uptime and at the lowest cost of operation; having the right sweeper for your application is key.

From the moment you first experience the simplicity, reliability, and productivity of a Johnston Street Sweeper it will be clear why Johnston is the world's leading manufacturer of street sweepers.

*** Government funding available! Call for more information ***



www.phsupplyco.com

Georgia / Alabama

Ga. Phone: 800-836-8705

Al. Phone: 205-907-7074

1-800-836-8705

Thank you for your business!

The P&H Supply Team

P & H SUPPLY

ALABAMA GEORGIA



Serving Alabama and Georgia!

1-800-836-8705

www.phsupplyco.com